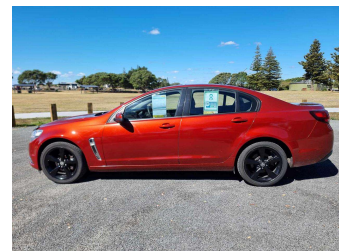
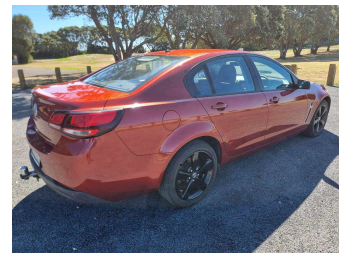


2016 Holden Commodore VFII Evoke



Purchase Price

Includes GST, Registration & Licensing

\$14,990

Indicative repayments

\$102.79 per week*

Based on a 165 week term & 10% deposit.
Total repayments (165) = **\$18,459.7**



Gain peace of mind with
Mechanical Breakdown
Insurance. **Ask us how.**



Top features

- » ABS Braking
- » Air Conditioning
- » Alloy wheels
- » Auto lights
- » Bluetooth
- » Bonnet protector
- » CD player
- » Chain-driven
- » Cruise Control
- » Electric Driver's seat
- » Electric mirrors
- » Electric windows
- » Fuel injected
- » Immobilizer
- » Multiple Airbags
- » Park-Assist
- » Power steering
- » Remote Locking

Body Style

4 door, Sedan

Odometer

173,240 km

Engine

3000 cc

Fuel Type

Petrol

Transmission

6-Speed Auto (Tiptronic), 2WD

Wheels

18", Custom Alloys

VIN

6G1FA5E59GL222680

Interior

Black/Grey

Safety



Based on 2024 UCSR rating
for 13-17 models

Reg No.

JTR127

Ext Colour

Red metallic

History

NZ New

Seats

5 seats, Cloth

CO2 Emissions

★ ★ ★ ☆ ☆ ☆

229 grams/km

Energy Economy

★ ★ ☆ ☆ ☆ ☆

Annual fuel cost of \$3,760
9.6L per 100km

Cost per year is an estimate based
on petrol price of \$2.80 per litre and
an average distance of 14000 km.
Emissions and Energy Economy
figures standardised to 3P WLTP.

Stock ID: 3210



C & C Auto's | Phone 06 754 4079 | Email sales@cncauto.co.nz
1351 Devon Road, Brixton, New Plymouth 4382, New Zealand
www.cncauto.co.nz

* C & C Auto's is not a lender nor a financial adviser. Any amounts displayed should not be seen as an offer of finance or taken as financial advice. The interest rate, fees and loan term used in this calculation may not actually represent those available from lenders. Actual interest rates, fees and loan terms will vary per lender and are typically based on an assessment of your credit risk and responsible lending criteria. Any repayment amounts displayed are indicative only and have been calculated using several other indicative inputs. The interest rate used in this calculation is an arbitrary 12.35%, however exact interest rates vary per lender. The term of the loan used in this calculation is 165 week. Exact terms available vary per lender although options typically include 6, 12, 18, 24, 36, 48 and 60 months. This calculation also includes two typical mandatory fees charged by lenders. These are an account admin fee of \$6.50 per month (other payment frequencies may be available) and a one-off establishment fee of \$323.00. Typically, this fee can be paid upfront or, as in this calculation, be capitalised over the contract term, ie. included in the loan amount. These fees can vary per lender and other non-mandatory fees and charges may also apply. The total amount of repayments has been calculated by multiplying 165 weekly repayments (based on a 165 week term) by the weekly repayment amount of \$102.79 which equals \$18,459.70. This calculator does not consider any of your own personal circumstances and we strongly suggest you seek budgeting advice prior to committing to any loan contract. Responsible lending criteria and lender terms and conditions will likely apply to any finalised loan contract. Proof of security and/or vehicle insurance may also be required before proceeding.

Vehicle data updated 16 January 2026 12:28